

Sabroe SMC 112 S mk2 package

Specifications

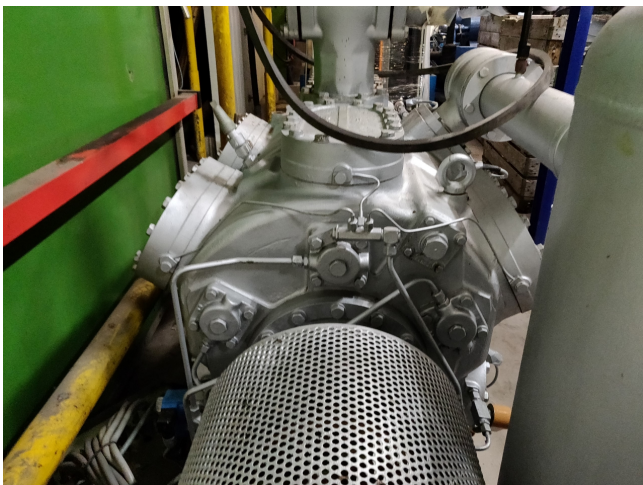
Brand	Sabroe
Type	SMC 112 S mk2 package
Refrigerant	NH 3 (ammonia)
kW at +10°C/+40°C	510,9
kW at 0°C/+40°C	348,8
kW at -5°C/+40°C	283,2
kW at -10°C/+40°C	226,8
kW at -20°C/+40°C	138,1
kW at -30°C/+40°C	76,2
kW at -40°C/+40°C	35,2
Electromotor Specs	110 kW at 1475 RPM
On steel base frame	✓
Liquid receiver	✓
Control panel	✓
m3 / h	655
Package / Rack	✓
Stock	1



Description

Used Sabroe SMC 112 S mk2 package

Used well maintained Sabroe SMC 112 S compressor, with 110 kW electromotor 1475 RPM. Our capacity table is based on R717. For all the other specs (if available), see the picture of the manufacturer model plate or the attached pdf file. *Why choose for HOSBV? Were not only the largest used refrigeration specialist in Europe, but also, we deliver all equipment including an extensive test, warranty and industrial cleaning. *Optional we can also perform a new paint job and arrange the logistics.



Model	Number of cylinders	Bore x stroke	Swept volume at 1800 rpm	Nominal capacities kW						Dimensions in mm			Weight excluding motor kg	Sound pressure level dB(A)
				R217						B404A				
				Single/high stage		Booster	Single/high stage		Direct coupled unit					
				-10/+33°C	0/+33°C		0/-33°C	0/+33°C	-10/+33°C	L	W	H		
SMC 104 S	4	100 x 80	271	129	209	35	205	132	2400-2800	1228	1303	830	80	
SMC 104 L	4	100 x 100	339	167	266	46	208	235	2400-2800	1228	1303	830	81	
SMC 104 E	4	100 x 120	339	206	324	57	N/A	N/A	2400-2800	1228	1303	830	81	
SMC 105 S	6	100 x 80	407	194	313	52	308	197	2400-2800	1190	1236	825	81	
SMC 105 L	6	100 x 100	500	251	398	70	312	202	2400-2800	1190	1236	825	82	
SMC 105 E	6	100 x 120	500	309	486	86	N/A	N/A	2400-2800	1190	1236	825	82	
SMC 108 S	8	100 x 80	543	259	427	70	420	263	2400-2800	1301	1303	990	82	
SMC 108 L	8	100 x 100	679	335	521	93	416	270	2400-2800	1301	1303	990	83	
SMC 108 E	8	100 x 120	679	412	648	115	N/A	N/A	2400-2800	1301	1303	990	83	
SMC 112 S	12	100 x 80	814	389	626	106	416	395	2425-3000	1290	1314	1660	83	
SMC 112 L	12	100 x 100	1018	502	796	140	624	405	2425-3000	1290	1314	1660	83	
SMC 112 E	12	100 x 120	1018	618	972	172	N/A	N/A	2425-3000	1290	1314	1660	83	
SMC 115 S	16	100 x 80	1086	517	834	141	821	526	2475-3200	1301	1314	1760	84	
SMC 115 L	16	100 x 100	1357	669	1062	187	831	539	2475-3200	1301	1314	1760	84	
SMC 115 E	16	100 x 120	1357	824	1297	230	N/A	N/A	2475-3200	1301	1314	1760	84	

PUBL 05/12 2022 11-1

Nominal capacities are based on 5°C subcooling and 1500 mm